

# E485

NEW HOLLAND KOBELCO



E485LCH

E485BEH

NET FLYWHEEL POWER

250 kW - 340 hp

OPERATING WEIGHT (MAX)

50 250 kg

49 600 kg

BUCKET CAPACITY

1.66 - 2.26 m<sup>3</sup>

1.66 - 2.60 m<sup>3</sup>



**NEW HOLLAND**

PROVEN PERFORMANCE

# E485\*

- EVOLUTION IN TECHNOLOGY
- EVOLUTION IN COMFORT
- EVOLUTION IN EQUIPMENT



## **P**RODUCTIVITY:

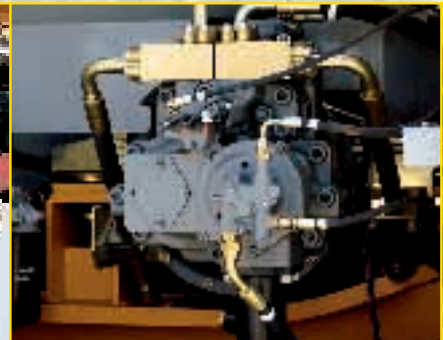
The perfect match between the top engine performances and the great delivery of hydraulic pumps lands to a productivity which is 8% higher than in the previous model.



### ■ LAST GENERATION ISUZU ENGINE

The engine has an adequate displacement to supply a high torque same time featuring low fuel consumption.

Its conformity to the European Rules 97/68/CE TIER 2, highly respecting the environment, does not affect the exceptional power output.



### ■ HYDRAULIC SYSTEM

The hydraulic system S.H.S. (Smart Hydraulic System) features an electronic management of pumps delivery and of main control valve spools actuation. Precisely and promptly following manipulators strokes, the onboard computer grants an outstanding controllability and simultaneous movements.

■ EVOLUTION IN PRODUCTIVITY AND CONSUMPTION AND SAFETY ■ EVOLUTION IN ACCESSIBILITY AND SERVICE ■ EVOLUTION IN VERSATILITY ■ EVOLUTION IN RELIABILITY



■ **HD TRACK CHAINS AND SEVERE SERVICE DIPPERSTICKS**

Higher class trackchains with 6% increased link pitch if compared to the previous model, grant an outstanding strength and durability on all kind of rough terrain. Moreover, special external reinforcement and wear plates are standard welded on dippersticks, thus providing maximum integrity even when digging tough grounds or handling rocks.

■ **AUTOMATIC CENTRALISED LUBRICATION**

A standard automatic centralised lubrication system which can be programmed in advance in terms of timing, frequency and quantity of grease released, grants the necessary lubrication of all specific points. This means shorter maintenance time, no risk of abnormal wear and greater operator comfort.

■ **“HIGH SPACE” CAB**

Perfect visibility in all directions thanks to the wide glass surface and transparent cab roof. The extremely low noise level thanks to elastoviscous connection to the upperstructure and a deep study of the best ergonomical solutions make this cab really innovative and comfortable. It offers also an optimised safety package (optional) designed, tested and homologated to be fitted with a FOPS canopy along with a front windshield protective grid.

# E485 SPECIFICATIONS



## TIER 2 EMISSIONED ENGINE

Net flywheel power (ISO 14396)	250 kW/340 hp
Rated rpm	1950
Make and model	ISUZU AA-6SD1XQY
Type	Diesel, 4 strokes, direct injection, turbocharged
Total displacement	9.8 l
Number of cylinders	6
Bore x stroke	120 x 145 mm
Maximum torque at 1600 rpm	1275 Nm

**Remote location engine oil filter and water/fuel separator** for easy replacement

**Engine rpm electronic control** with knob selector.

**Automatic idling return selector** with "Auto-Idling" controls in neutral Start at -15° outside temperature as standard equipment (-25° as an optional device)

*The engine conforms to 97/68/CE STAGE 2*



## ELECTRICAL SYSTEM

Operating voltage	24 V
Alternator	50 A
Starter motor	5.5 kW
Standard maintenance-free batteries	2
Capacity	160 Ah



## HYDRAULIC SYSTEM

**S.H.S. (Smart Hydraulic System)** for outstanding controllability and complete simultaneous movements.

Generation **A.I. (Artificial Intelligence)** on-board computer

**A.P.S. (Automatic Priority System device)**

**Hydraulic valve, rod opening and pump delivery computerised control** according to manipulator travel

**E.S.S.C. (Engine Speed Sensing Control) device** for total use of installed hydraulic power

**High definition E.T.U. (Easy to Use) multifunction monitor** incorporating:

- Maintenance programme
- Self Diagnosis System
- Operating Data Storage

**Mechatronic Work Selector (M.W.S.):**

- **Standard Mode (W)** - Standard operating mode
- **Heavy/Mechatronic Mode (H/M)** - Maximum hydraulic power for top productivity. In this function, the machine "learns" the work cycle it operates after 2 cycles and automatically selects maximum efficiency/speed and operating precision with the A.P.S. Automatic Priority System device.
- **Attachments Mode (A)** - Possible selection and storage of supplementary implement delivery from the cab

Continuous untimed insertion **Power Boost Device**. Continuous insertion of the device, when selected, ensures maximum digging performance and productivity in the toughest applications.

**Double delivery device supplied standard**

**Piping pressure release push button:** to facilitate tooling change without oil loss from piping

**Hammer/two-directional pincer system**

Main pumps:

two variable delivery pumps with electronic delivery adjustment  
With controls on neutral, the pumps automatically move to displacement position "0".

Maximum delivery .....2 x 370 l/min

Piloting circuit gear type pump

Maximum delivery .....28 l/min

Maximum operating pressure:

Equipment	31.4 MPa
Power Boost	34.3 MPa
Travel	34.3 MPa
Swing	25.0 MPa
Hydraulic cylinders	double effect
- Lift (2) - Bore x Stroke	170 x 1589 mm
- Penetration (1) - Bore x Stroke	190 x 1970 mm
- Bucket (1) - Bore x Stroke	170 x 1300 mm



## TRANSMISSION

Type .....two-speed hydrostatic

Motors .....axial pistons double displacement type, collapsible into track carriage

Brakes .....oil bath disc type, automatically applied and hydraulically released

Final drives .....oil bath, planetary reduction

Maximum slope .....70% (35°) continuous

Travel speeds:

slow .....0 to 3.5 km/h

high .....0 to 5.6 km/h

**"Automatic DownShift" device:** with selector on "fast" in case of need for more traction force adjusts travel motors to maximum displacement.



## SWING

Swing motors .....two, axial piston type

Swing brake .....oil bath disc type, automatically applied and hydraulically released

Final drive .....oil bath, planetary reduction

Circle .....grease bath type

Swing speed .....9.0 rpm



## CAB AND CONTROLS

Transparent opening roof.

Standard automatic conditioning

Controls .....piloted

Two cross travel levers control all equipment movements and superstructure swing.

Two pedals with hand levers control all track movements, counter-rotation included.

A safety lever neutralises the piloting circuit completely.



## UNDERCARRIAGE

Type .....variable gauge

X-design undercarriage

Sealed bushing reinforced track HD chain

Chain link pitch .....229 mm

### E485LCH-E485BEH

Track rollers (each side)	9
Carrier rollers (each side)	3
Length of track on ground (mm)	4400
Minimum gauge (mm)	2390
Maximum gauge (mm)	2890
Shoes available (mm)	600-700 800-900

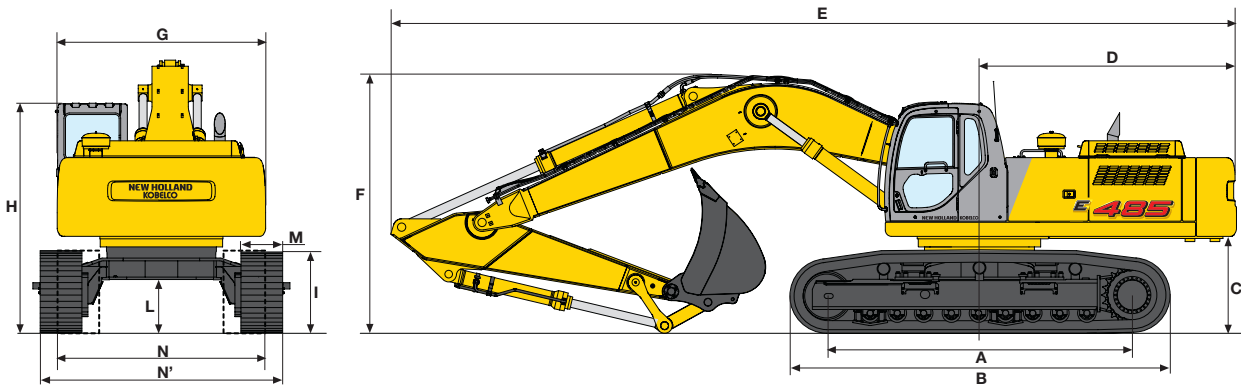


## CAPACITIES

Engine	litres
Lube oil	38
Antifreeze mixture	39
Fuel	663
Hydraulic tank	300

# E485LCH

## DIMENSIONS (mm) - OPERATING WEIGHT



Version	A	B	C	D	E	F	G	H	I	L
					(1) 12175	(1) 3730				
<b>E485LCH</b>	4400	5470	1394	3342	(2) 12110	(2) 3590	3000	3310	1203	775
					(3) 12120	(3) 3610				

Dipperstick: (1) 2900 mm - (3) 3450 - (4) 4040 mm

		E485LCH			
<b>M - Shoe width</b>	mm	600	700	800	900
<b>N - Minimum width</b>	mm	2990	3090	3190	3290
<b>N' - Maximum width</b>	mm	3490	3590	3690	3790
<b>Operating weight</b>	kg	48600	49150	49700	50250
<b>Specific ground pressure</b>	bar	0.90	0.78	0.70	0.62

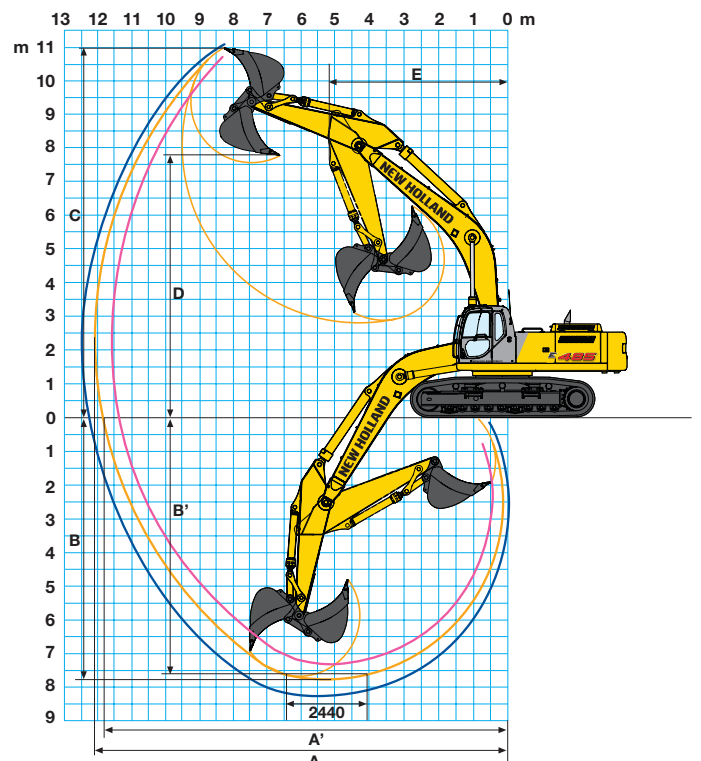
## DIGGING PERFORMANCE



DIPPERSTICK		2900	3450	4040
<b>A</b>	mm	11553	12079	12577
<b>A'</b>	mm	11308	11845	12353
<b>B</b>	mm	7226	7770	8366
<b>B'</b>	mm	7061	7626	8237
<b>C</b>	mm	10707	10969	11032
<b>D</b>	mm	7531	7767	7884
<b>E</b>	mm	5237	5173	5187

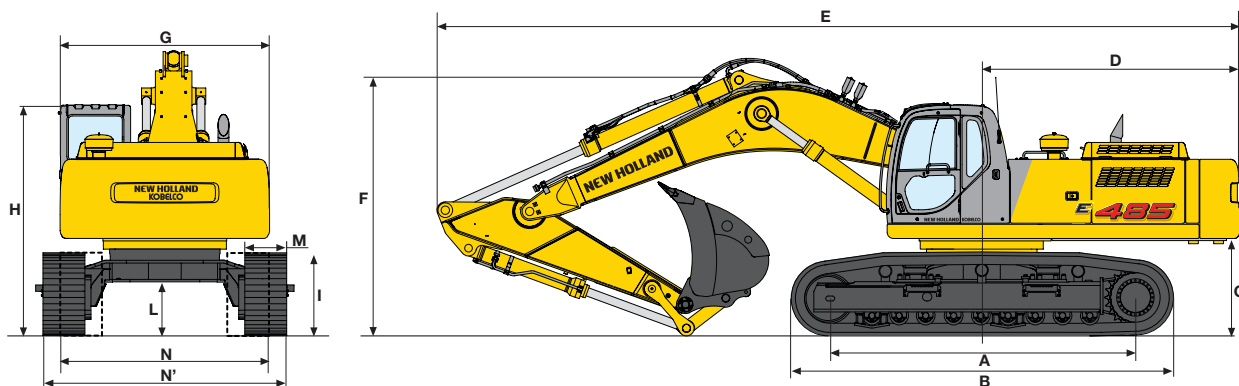
BREAKOUT FORCE:				
<b>BUCKET</b>	daN	24800	24800	24800
<b>DIPPERSTICK</b>	daN	22800	18000	15200

WITH POWER BOOST ON				
<b>BUCKET</b>	daN	27000	27000	27000
<b>DIPPERSTICK</b>	daN	25200	19900	16900



# E485BEH

## DIMENSIONS (mm) - OPERATING WEIGHT



Version	A	B	C	D	E	F	G	H	I	L
E485BEH	4400	5470	1394	3700	11500	3980	3000	3310	1203	775

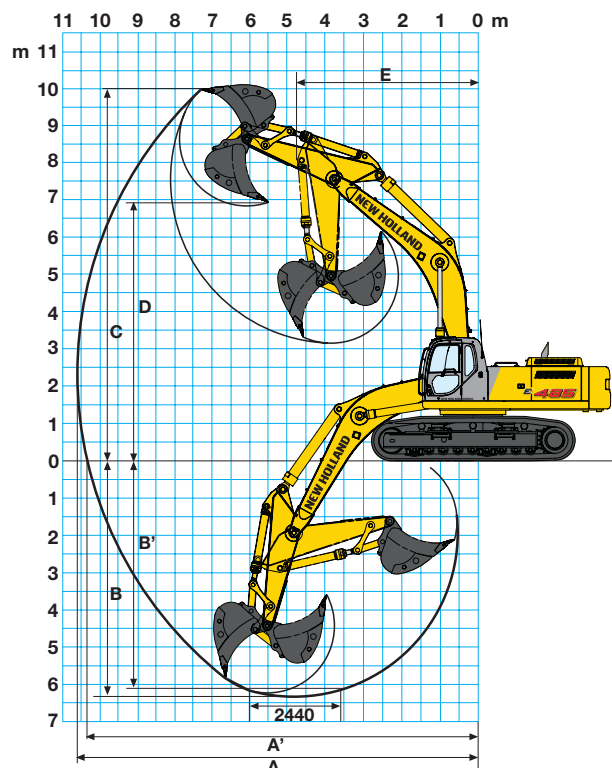
		E485BEH			
M - Shoe width	mm	600	700	800	900
N - Minimum width	mm	2990	3090	3190	3290
N' - Maximum width	mm	3490	3590	3690	3790
Operating weight	kg	47950	48500	49050	49600
Specific ground pressure	bar	0.89	0.77	0.68	0.61

## DIGGING PERFORMANCE

DIPPERSTICK		2600
A	mm	10633
A'	mm	10366
B	mm	6343
B'	mm	6171
C	mm	9997
D	mm	6856
E	mm	4721

BREAKOUT FORCE:		
BUCKET	daN	24800
DIPPERSTICK	daN	26500

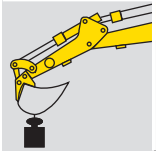
WITH POWER BOOST ON		
BUCKET	daN	27000
DIPPERSTICK	daN	28100



# E485 LIFTING CAPACITY

VALUES ARE EXPRESSED IN TONNES

## RADIUS OF LOAD



1.5 m		3.0 m		4.5 m		6.0 m		7.5 m		9.0 m		10.5 m		AT MAX. REACH		REACH m
FRONT	SIDE	FRONT	SIDE	FRONT	SIDE	FRONT	SIDE	FRONT	SIDE	FRONT	SIDE	FRONT	SIDE	FRONT	SIDE	

### E485LCH DIPPERSTICK 2900 mm

HEIGHT	1.5 m		3.0 m		4.5 m		6.0 m		7.5 m		9.0 m		10.5 m		AT MAX. REACH		REACH m	
+7.5 m																8.6*		8.6*
+6.0 m									9.2*	9.2*	8.7*	8.4*				8.7*	7.9*	9.3
+4.5 m					16.0*	16.0*	12.1*	12.1*	10.2*	10.2*	9.2*	8.2				8.9*	7.1	9.8
+3.0 m					20.4*	20.4*	14.3*	14.3*	11.4*	10.4	9.8*	7.9				9.2*	6.7	10.0
+1.5 m					21.3*	21.1	16.1*	13.8	12.5*	10.0	10.4*	7.7				9.5*	6.5	10.0
0 m					23.7*	20.7	17.1*	13.4	13.2*	9.7	10.9*	7.5				10.0*	6.7	9.7
-1.5 m			17.3*	17.3*	23.4*	20.7	17.3*	13.3	13.4*	9.6	10.9*	7.4				10.5*	7.2	9.2
-3.0 m			26.0*	26.0*	21.9*	20.9	16.6*	13.3	12.9*	9.6						11.1*	8.2	8.4
-4.5 m			25.9*	25.9*	19.2*	19.2*	14.7*	13.6								11.7*	10.4	7.2
-6.0 m																13.7*	13.7*	5.4

### E485LCH DIPPERSTICK 3450 mm

HEIGHT	1.5 m		3.0 m		4.5 m		6.0 m		7.5 m		9.0 m		10.5 m		AT MAX. REACH		REACH m	
+7.5 m											7.8*	7.8*				7.8*		7.8*
+6.0 m											8.0*	8.0*				7.9*	7.1*	9.9
+4.5 m									9.5*	9.5*	8.6*	8.2				8.2*	6.4	10.3
+3.0 m					18.7*	18.7*	13.4*	13.4*	10.7*	10.5	9.3*	7.9	8.4*	6.1		8.4*	6.1	10.5
+1.5 m					22.0*	21.3	15.3*	13.9	11.9*	10.0	10.0*	7.6	8.8*	6.0		8.8*	5.9	10.5
0 m			9.7*	9.7*	23.5*	20.7	16.6*	13.3	12.8*	9.6	10.5*	7.4				9.2*	6.0	10.3
-1.5 m	11.7*	11.7*	15.8*	15.8*	23.5*	20.5	17.1*	12.6	13.3*	9.4	10.8*	7.3				9.7*	6.4	9.8
-3.0 m	17.5*	17.5*	22.6*	22.6*	22.5*	20.6	16.8*	13.1	13.0*	9.4	10.3	7.3				10.2*	7.2	9.1
-4.5 m			28.4*	28.4*	20.3*	20.3*	15.4*	13.3	11.8*	9.6						10.8*	8.8	8.0
-6.0 m					16.2*	16.2*	12.1*	12.1*								11.2*	11.2*	6.3

### E485LCH DIPPERSTICK 4040 mm

HEIGHT	1.5 m		3.0 m		4.5 m		6.0 m		7.5 m		9.0 m		10.5 m		AT MAX. REACH		REACH m	
+7.5 m											6.9*	6.9*				6.7*		6.7*
+6.0 m											7.3*	7.3*				6.8*	6.5	10.4
+4.5 m									8.7*	8.7*	7.9*	7.9*				7.0*	5.9	10.8
+3.0 m			13.6*	13.6*	16.8*	16.8*	12.3*	12.3*	10.0*	10.0*	8.7*	7.9	7.5*	6.3		7.4*	5.6	11.0
+1.5 m			7.9*	7.9*	20.7*	20.7*	14.4*	14.1*	11.3*	10.1	9.4*	7.6	8.4*	5.9		8.0*	5.4	11.0
0 m	6.0*	6.0*	10.7*	10.7*	22.8*	20.8	16.0*	13.4	12.4*	9.6	10.0*	7.3	8.7*	5.8		8.5*	5.5	10.8
-1.5 m	10.7*	10.7*	15.1*	15.1*	23.5*	20.4	16.8*	13.1	13.0*	9.4	10.6*	7.2				8.9*	5.8	10.3
-3.0 m	15.5*	15.5*	20.6*	20.6*	23.0*	20.4	16.8*	12.9	13.1*	9.3	10.5*	7.1				9.5*	6.4	9.7
-4.5 m	21.0*	21.0*	27.6*	27.6*	21.3*	20.6	15.9*	13.0	12.3*	9.4						10.1*	7.7*	8.6
-6.0 m			25.4*	25.4*	18.1*	18.1*	13.6*	13.4								10.8*	10.4	7.2

### E485BEH DIPPERSTICK 2600 mm

HEIGHT	1.5 m		3.0 m		4.5 m		6.0 m		7.5 m		9.0 m		10.5 m		AT MAX. REACH		REACH m	
+7.5 m																10.3*		10.3*
+6.0 m									10.3*	10.3*						10.2*	9.3	8.2
+4.5 m					11.4*	11.4*	11.3*	11.3*	10.8*	10.7						10.3*	8.2	8.7
+3.0 m					12.1*	12.1*	12.1*	12.1*	11.5*	10.0						10.6*	7.6	9.0
+1.5 m					13.3*	13.3*	12.1*	11.7	12.3*	9.5						10.9*	7.5	9.0
0 m					15.2*	12.4	14.3*	10.9	13.0*	9.3						11.3*	7.8	8.7
-1.5 m			18.8*	14.9	17.1*	13.0	15.3*	11.3	13.1*	9.5						11.7*	8.6	8.1
-3.0 m			20.8*	20.8*	17.9*	15.9	15.1*	12.8								12.0*	10.4	7.2
-4.5 m					15.6*	15.6*										11.7*	11.7*	5.8

As per ISO 10567 with excavator equipped with bucket. The indicated load is no more than 87% of hydraulic system lift capacity or 75% of static tipping load. Value marked with an asterisk are limited by the hydraulic system.

# STANDARD EQUIPMENT

- 2600 Dipperstick (BEH version)
- 2900 Dipperstick (LCH version)
- Anti-leakage main spool hydraulic control valve
- Auto-Idling
- Cell phone holder with charge socket
- Centralised automatic lubrication
- Cyclone prefilter
- Double delivery
- Double travel speed with Automatic DownShift
- Engine rpm electronic control
- Fuel transfer electrical pump
- Grease bath circle
- Hammer/pincer system predisposition
- Hammer piping on booms
- HD sealed type tracks chains and 229 mm pitch link
- Horn
- Hydraulic piping and connections with front seals
- Hydraulic travel end cylinders
- Hydraulically suspended cab with transparent opening roof and automatic air conditioning system
- Maintenance-free batteries
- Mechanically suspended heated operator seat
- Mechatronic Mode Selector
- Multi-function electronic instrument panel
- Pedal or lever travel control
- Power Boost
- Radio set
- Shoes: 600 mm
- Smart Hydraulic System
- Swing and travel motors with automatic disc brakes
- TIER 2 emission Diesel engine
- Tool kit
- Two-speed intermittent windshield wiper
- Variable gauge undercarriage
- Version LCH or BEH

# OPTIONAL EQUIPMENT

- 3450 mm Dipperstick (LCH version)
- 4040 mm Dipperstick (LCH version)
- Antidrop valves on dipper stick cylinder
- Antidrop valves on lift cylinders
- Compressed air suspended heated seat
- Fops protection on cab roof and front window grid
- Fuel transfer electrical pump
- Grab bucket/grass cutter bucket low delivery supplementary hydraulic function predisposition
- Heavy duty, rock and special buckets with bucket/boom setting device
- Hydraulic quick coupler predisposition
- Mechanical quick coupler
- Northern country equipment
- Overhead load handling
- Piping on booms for supplementary low delivery function
- Shoes LCH/BEH: 700 mm - 800 mm - 900 mm
- Supplementary lights on cab

Note: standard and optional equipment may vary by country. Consult your NEW HOLLAND dealer for specific details.

## BUCKETS

SAE CAPACITY/m <sup>3</sup>	CECE HEAPED CAPACITY/m <sup>3</sup>	WIDTH/mm	WEIGHT/kg
1.66	1.48	1320	1231
1.83	1.63	1420	1328
2.05	1.82	1550	1409
2.26	2.00	1670	1468
2.60*	2.31*	1740	1850*

\* Only for E485BEH

### AT YOUR OWN DEALERSHIP

The information contained in this brochure is intended to be a general nature only. The NEW HOLLAND KOBELCO CONSTRUCTION MACHINERY S.p.A. company may at any time and from time to time, for technical or other necessary reasons, modify any of the details or specifications of the product described in this brochure. Illustrations do not necessarily show products in standard conditions. The dimensions, weights and capacities shown herein, as well as any conversion data used, are approximate only and are subject to variations within normal manufacturing techniques.

Published by NEW HOLLAND KOBELCO CONSTRUCTION MACHINERY S.p.A. - [www.newholland.com](http://www.newholland.com)  
 Printed in Italy - LEADER Firenze - Cod. 73301511 - INB - Printed 02/05



A product of the global alliance between CNH and KOBELCO



NEW HOLLAND IS A BRAND OF CNH.  
 CNH: THE TOTAL SOLUTIONS CHOICE FOR YOUR SPECIFIC BUSINESS NEEDS.