

 **NEW HOLLAND**

E40.2/50.2SR

NEW HOLLAND KOBELCO



	E40.2SR	E50.2SR
NET FLYWHEEL POWER	32 kW - 43 hp	
OPERATING WEIGHT (MAX)	4 440 kg	4 870 kg
REAR END SWING RADIUS	980 mm	
BUCKET CAPACITY	0.09 - 0.18 m ³	

 **NEW HOLLAND**

PROVEN PERFORMANCE

E40.2/50.2SR*

PERFORMANCE

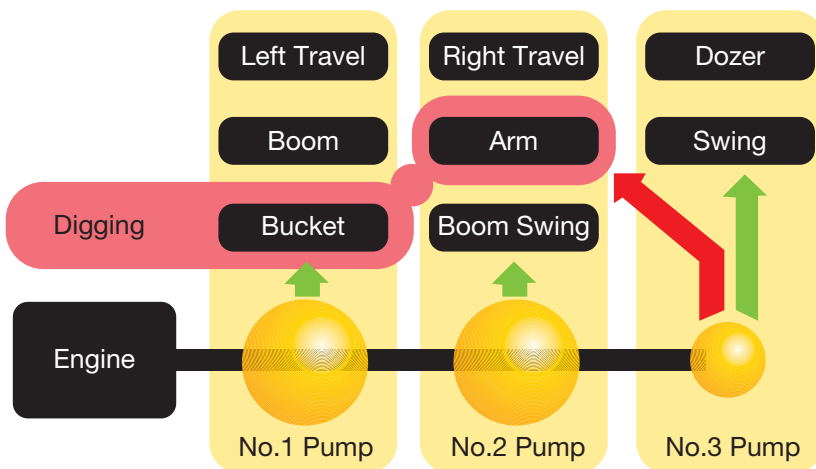
FAST, FULL-POWERED
DIGGING AND LEVELLING



DOZER BLADE SHAPE

- Conventional dozer blades simply push the earth straight ahead and the earth spills down behind the blade. Our new blade design solves this problem by forming the earth into an arc that always falls forward. Because this prevents earth from falling behind the blade, only “one pass” is needed.

POWERFUL AND EFFICIENT DOZER
PERFORMANCE FOR OUTSTANDING
LEVELLING OPERATIONS



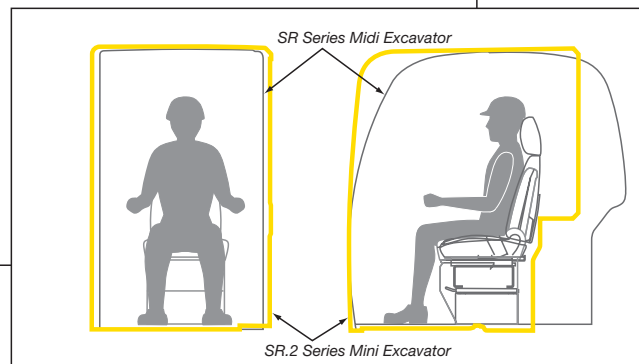
INTEGRATED-FLOW PUMP SYSTEM (THREE PUMPS) FOR TOTAL SIMOULTANEOUS MOVEMENTS

- The instant the machine begins to dig, extra output from the third pump (which otherwise powers the swing and dozer circuits) is directed to the arm circuit for added power. This ensures fast and smooth arm operation even under heavy loads.



COMFORT SPACIOUS WORK ENVIRONMENT

- “High Space” cab with perfect visibility in all directions thanks to the wide glass surface and transparent cab roof. Extremely low noise level and effective reduction of vibrations. All controls are within hand reach and in ergonomic position: more than a “living room” cab for maximum operator comfort.
- The floor space has been broadened and the sliding range of the seat has been increased to give operators plenty of foot room. Wide operational space with more room between the left and right control consoles.



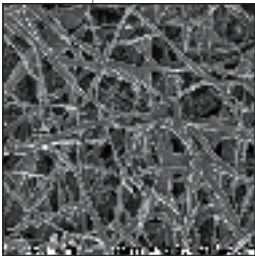
E40.2/50.2SR

MAINTENANCE AND DURABILITY

EASY MAINTENANCE

- Start-up checks are essential for safe and reliable machine operation. With the SR.2 machines, all start-up checks can be performed at ground level, with an easy-to-understand layout and cover design that simplify access and reduce check times.

CONVENTIONAL FILTER



SUPER FINE FILTER

NEW HOLLAND EXCLUSIVE FINE FILTER

- This exclusive super-fine filter is environmentally friendly, lasts 1000 hours, and easy to replace.



HIGH DURABILITY

Whether you are digging, loading, lifting or levelling, it is the attachment that provides the key to better productivity. Our new high-tensile steel front attachment, ensures that you can virtually handle any application. Similarly the cross-section area of the box-shaped boom has been increased for added strength.



Boom flexing resistance

Lengthwise: **12% UP**

Lateral: **17% UP**

Forged boom top
Self-locking pins firmly lock the bottom and arm to prevent the boom top from opening laterally

SPECIFICATIONS



MAIN FEATURES

Net flywheel power (ISO14396)	32 kW/43 hp
Operating weight with steel shoes	
canopy	4300/4730 kg
cab	4440/4870 kg
Maximum digging depth	3660/3900 mm
Breakout force: bucket	36 kN
dipperstick (1430/1560 mm)	22/27 kN
Transport length	5000/5230 mm
Transport width	1960 mm
Transport height	2600 mm



ENGINE

Make	YANMAR
Model	4TNV88-XYB
Type	4-stroke diesel, direct injection
Number of cylinders	4
Displacement	2190 cm ³
Rated speed	2400 rpm

“Auto-Idling” as standard.
Tier 2 emissioned engine conforms to 97/68/CE STAGE 2 Rules



ELECTRICAL SYSTEM

Batteries	1 x 72 Ah
Voltage	12 V
Alternator	55 A
Starter motor	2.3 kW



HYDRAULIC SYSTEM

S.H.S. (Smart Hydraulic System) with two axial piston variable displacement pumps and one gear pump for completely fully simultaneous movements, including blade and slewing. The three pumps ensure full use of all installed hydraulic power in individual and combined movements.

Pumps:

- Variable displacement hydraulic pumps	axial piston type
Total delivery	2 x 57 l/min
Gear pump delivery	34 l/min
Maximum operating pressure	230 bar



SWING

Hydraulic motor	axial piston type
Swing speed	8.8 rpm
Swing brake	automatic
Boom slewing angle:	
- left	70°
- right	60°

Additional bolted counterweight is available when “High stability” performance is required.

Weight	+ 350 kg
Rear end swing radius	+ 100 mm

Minimum (980 mm) rear end swing radius ensures upperstructure to remain within track overall dimensions.



UNDERCARRIAGE

Length of track on ground	1820/1970 mm
Gauge	1560 mm
Shoe width (Rubber/Steel)	400 mm
Ground pressure	from 0.26 to 0.27 bar
Upper/lower rollers	1/5
Travel speeds	2

“Automatic DownShift” as standard

Travel speed range (Rubber tracks)	2.8/4.6 km/h
Travel speed range (Steel tracks)	2.5/4.2 km/h
Maximum continuous slope	58% (30°)



BLADE

Width x height	1960 x 345 mm
Blade lift	505/495 mm
Blade lower	325/375 mm



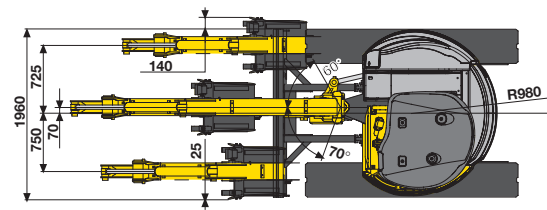
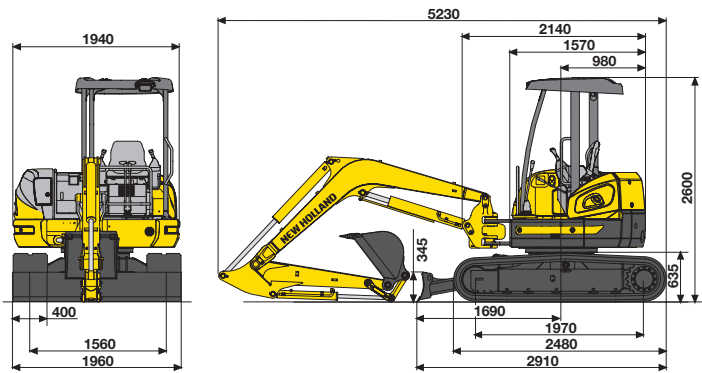
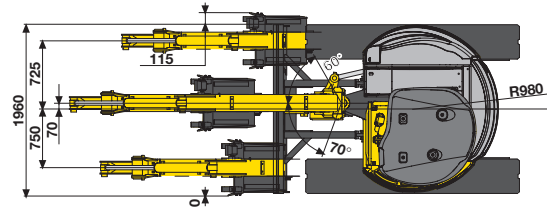
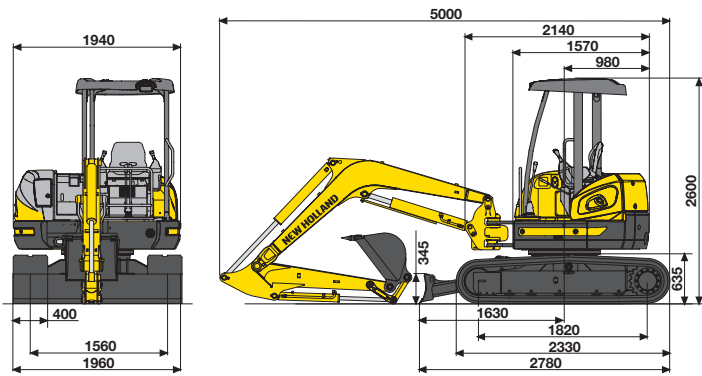
CAPACITIES

	litres
Fuel	53.0
Coolant	6.0
Engine oil	7.4
Hydraulic system	63.0



E40.2/50.2SR

DIMENSIONS (mm) - OPERATING WEIGHT



DIGGING PERFORMANCE

(cab/canopy)

E40.2SR

DIPPERSTICK	mm	1430	1700 (standard)
A	mm	2410/2100	2430/2200
B	mm	5510	5770
C	mm	5660	5920
D	mm	3620/3910	3790/4100
E	mm	2630	2910
F	mm	5180/5490	5340/5680
G	mm	3390	3660
X	mm	505	505
Y	mm	325	325

BREAKOUT FORCE

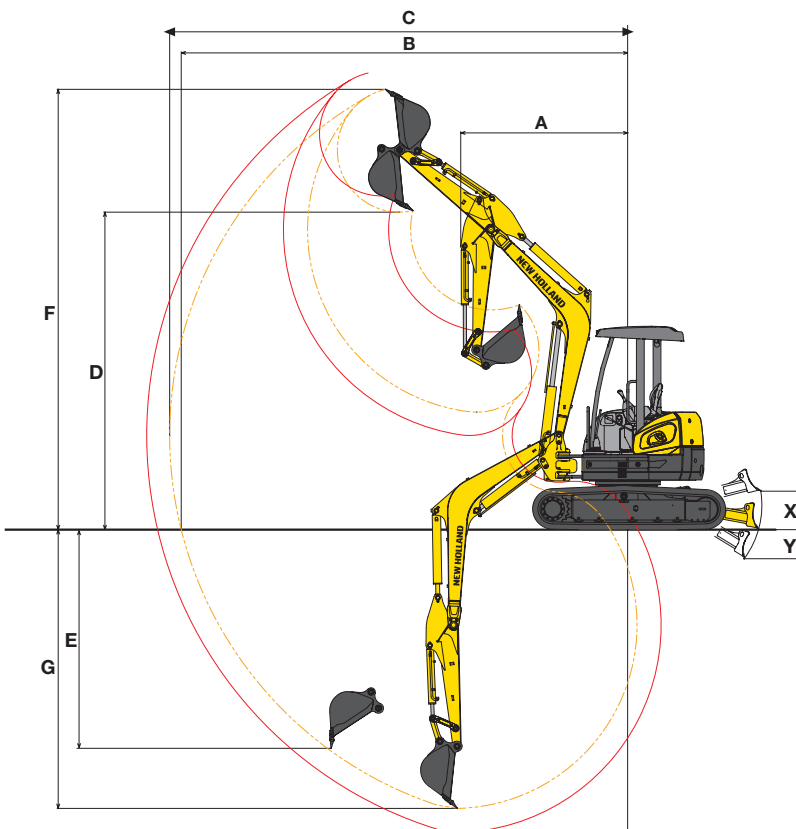
BUCKET	kN	36.0	36.0
DIPPERSTICK	kN	22.0	20.0

E50.2SR

DIPPERSTICK	mm	1560	1870 (standard)
A	mm	2560/2150	2580/2230
B	mm	5750	6050
C	mm	5890	6190
D	mm	3680/4090	3840/4290
E	mm	2810	3120
F	mm	5210/5670	5380/5880
G	mm	3590	3900
X	mm	495	495
Y	mm	375	375

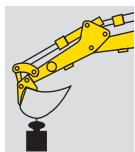
BREAKOUT FORCE

BUCKET	kN	36.0	36.0
DIPPERSTICK	kN	27.0	24.0



LIFTING CAPACITY

VALUES ARE EXPRESSED IN TONNES



RADIUS OF LOAD

1.0 m		1.5 m		2.0 m		2.5 m		3.0 m		3.5 m		4.0 m		4.5 m		5.0 m		At max reach		REACH m
FRONT	SIDE	FRONT	SIDE	FRONT	SIDE	FRONT	SIDE	FRONT	SIDE	FRONT	SIDE	FRONT	SIDE	FRONT	SIDE	FRONT	SIDE	FRONT	SIDE	

E40.2SR DIPPERSTICK 1 430 mm

HEIGHT																						
+4.5 m									0.88	0.87												
+4.0 m											0.81	0.77										
+3.5 m											0.79	0.77	0.74	0.60								
+3.0 m											0.84	0.77	0.74	0.60								
+2.5 m										1.02	0.98	0.93	0.75	0.74	0.59	0.59	0.47					
+2.0 m							1.58	1.27	1.17	0.94	0.90	0.73	0.72	0.58	0.59	0.46						
+1.5 m							1.49	1.19	1.12	0.90	0.88	0.70	0.71	0.56	0.58	0.46						
+1.0 m							1.43	1.12	1.08	0.86	0.85	0.68	0.69	0.55	0.57	0.45				0.50	0.39	4.80
+0.5 m							1.40	1.10	1.05	0.83	0.83	0.66	0.68	0.53	0.56	0.44						
0					1.44	1.44	1.39	1.09	1.04	0.82	0.82	0.64	0.67	0.52	0.56	0.43						
-0.5 m	1.65	1.65	1.67	1.67	2.08	1.61	1.39	1.09	1.03	0.81	0.81	0.64	0.66	0.52								
-1.0 m	2.15	2.15	2.34	2.34	2.10	1.63	1.40	1.10	1.04	0.82	0.82	0.64	0.67	0.52								
-1.5 m	2.76	2.76	3.13	3.03	2.13	1.66	1.42	1.12	1.05	0.83	0.83	0.65										
-2.0 m	3.49	3.49	3.32	3.10	2.17	1.70	1.45	1.14	1.08	0.85												
-2.5 m					1.29	1.29																

E40.2SR DIPPERSTICK 1 700 mm

HEIGHT																						
+4.5 m											0.77	0.77										
+4.0 m													0.74	0.60								
+3.5 m													0.71	0.60								
+3.0 m													0.73	0.60	0.60	0.47						
+2.5 m											0.82	0.75	0.74	0.59	0.59	0.47						
+2.0 m									1.08	0.95	0.91	0.73	0.72	0.58	0.59	0.46	0.48	0.37				
+1.5 m							1.52	1.21	1.13	0.90	0.88	0.70	0.70	0.56	0.57	0.45	0.47	0.37				
+1.0 m							1.44	1.14	1.08	0.86	0.85	0.67	0.68	0.54	0.56	0.44	0.47	0.36	0.45	0.35	5.20	
+0.5 m							1.40	1.09	1.05	0.82	0.82	0.65	0.67	0.52	0.55	0.43	0.46	0.36				
0					1.41	1.41	1.37	1.07	1.03	0.80	0.81	0.63	0.66	0.51	0.54	0.42						
-0.5 m	1.33	1.33	1.44	1.44	1.93	1.58	1.37	1.07	1.02	0.79	0.80	0.62	0.65	0.51	0.54	0.42						
-1.0 m	1.77	1.77	1.98	1.98	2.06	1.59	1.37	1.07	1.02	0.79	0.80	0.62	0.65	0.50								
-1.5 m	2.27	2.27	2.61	2.61	2.08	1.61	1.39	1.08	1.02	0.80	0.80	0.63	0.66	0.51								
-2.0 m	2.87	2.87	3.40	3.01	2.12	1.65	1.41	1.11	1.04	0.82	0.82	0.65										
-2.5 m			2.83	2.83	1.90	1.70	1.41	1.15														
-3.0 m					0.87	0.87																

E50.2SR DIPPERSTICK 1 560 mm

HEIGHT																						
+4.5 m											1.05	0.88										
+4.0 m													0.98	0.71								
+3.5 m													0.98	0.72								
+3.0 m													0.98	0.71	0.79	0.57						
+2.5 m													1.17	0.88	0.97	0.70	0.79	0.57				
+2.0 m							2.01	1.48	1.53	1.10	1.18	0.86	0.95	0.68	0.78	0.56	0.65	0.46				
+1.5 m							1.97	1.39	1.47	1.05	1.15	0.83	0.93	0.67	0.77	0.55	0.64	0.45				
+1.0 m							1.90	1.32	1.42	1.01	1.12	0.80	0.91	0.65	0.76	0.53	0.64	0.45	0.62	0.43	5.10	
+0.5 m							1.86	1.28	1.39	0.98	1.10	0.78	0.89	0.63	0.75	0.52	0.63	0.44				
0					1.66	1.66	1.85	1.27	1.37	0.96	1.08	0.76	0.88	0.62	0.74	0.52						
-0.5 m	1.91	1.91	1.90	1.90	2.41	1.88	1.85	1.27	1.37	0.95	1.07	0.75	0.88	0.62	0.74	0.51						
-1.0 m	2.44	2.44	2.62	2.62	2.84	1.90	1.86	1.28	1.37	0.96	1.08	0.75	0.88	0.62								
-1.5 m	3.06	3.06	3.42	3.42	2.87	1.92	1.88	1.30	1.38	0.97	1.08	0.76	0.89	0.63								
-2.0 m	3.80	3.80	4.41	3.56	2.92	1.96	1.91	1.32	1.40	0.99	1.10	0.78										
-2.5 m	3.02	3.02	2.15	2.02	1.64	1.37																
-3.0 m					1.10	1.10																

E50.2SR DIPPERSTICK 1 870 mm

HEIGHT																						
+4.5 m													0.93	0.77								
+4.0 m																						
+3.5 m															0.80	0.57						
+3.0 m														0.88	0.72	0.80	0.57	0.65	0.46			
+2.5 m														0.97	0.70	0.79	0.56	0.65	0.46			
+2.0 m														1.18	0.86	0.95	0.68	0.78	0.55	0.64	0.45	
+1.5 m							2.01	1.42	1.48	1.06	1.15	0.83	0.93	0.66	0.76	0.54	0.64	0.44				
+1.0 m							1.92	1.33	1.43	1.01	1.12	0.79	0.90	0.64	0.75	0.52	0.63	0.43	0.55	0.38	5.40	
+0.5 m							1.86	1.28	1.38	0.97	1.09	0.76	0.88	0.62	0.73	0.51	0.62	0.43				
0					1.64	1.64	1.83	1.25	1.36	0.94	1.07	0.74	0.87	0.61	0.72	0.50	0.61	0.42				
-0.5 m	1.53	1.53	1.65	1.65	2.18	1.83	1.82	1.24	1.34	0.93	1.05	0.73	0.86	0.60	0.72	0.50	0.61	0.42				
-1.0 m	2.00	2.00	2.22	2.22	2.78	1.84	1.82	1.24	1.34	0.93	1.05	0.73	0.85	0.59	0.72	0.49						
-1.5 m	2.52	2.52	2.85	2.85	2.81	1.86	1.84	1.26	1.35	0.93	1.05	0.73	0.86	0.60								
-2.0 m	3.11	3.11	3.62	3.46	2.84	1.90	1.86	1.28	1.36	0.95	1.07	0.74	0.87	0.61								
-2.5 m	3.82	3.82	4.26	3.54	2.79	1.95	1.90	1.31	1.39	0.98												
-3.0 m					1.63	1.63	1.07	1.07														

As per ISO 10567 with excavator equipped with bucket



PARTS & SERVICE

The New Holland dealer network is, in itself, the best guarantee of continued productivity for the machines it delivers to its customers. New Holland service technicians are fully equipped to resolve all maintenance and repair issues, with each and every service point providing the high standards they are obliged to observe under New Holland's stringent quality guidelines.

The New Holland global parts network ensures fast, reliable, replacement parts for less downtime, increased productivity and, of course, profitable operation for its customers.

AT YOUR OWN DEALERSHIP

The information contained in this brochure is intended to be a general nature only. The NEW HOLLAND KOBELCO CONSTRUCTION MACHINERY S.p.A. company may at any time and from time to time, for technical or other necessary reasons, modify any of the details or specifications of the product described in this brochure. Illustrations do not necessarily show products in standard conditions. The dimensions, weights and capacities shown herein, as well as any conversion data used, are approximate only and are subject to variations within normal manufacturing techniques.

Published by NEW HOLLAND KOBELCO CONSTRUCTION MACHINERY S.p.A. - www.newholland.com
 Printed in Italy - LEADER Firenze - Cod. 73301191 - INB - Printed 02/05

A product of the global alliance between CNH and KOBELCO



NEW HOLLAND IS A BRAND OF CNH.
 CNH: THE TOTAL SOLUTIONS CHOICE FOR YOUR SPECIFIC BUSINESS NEEDS.